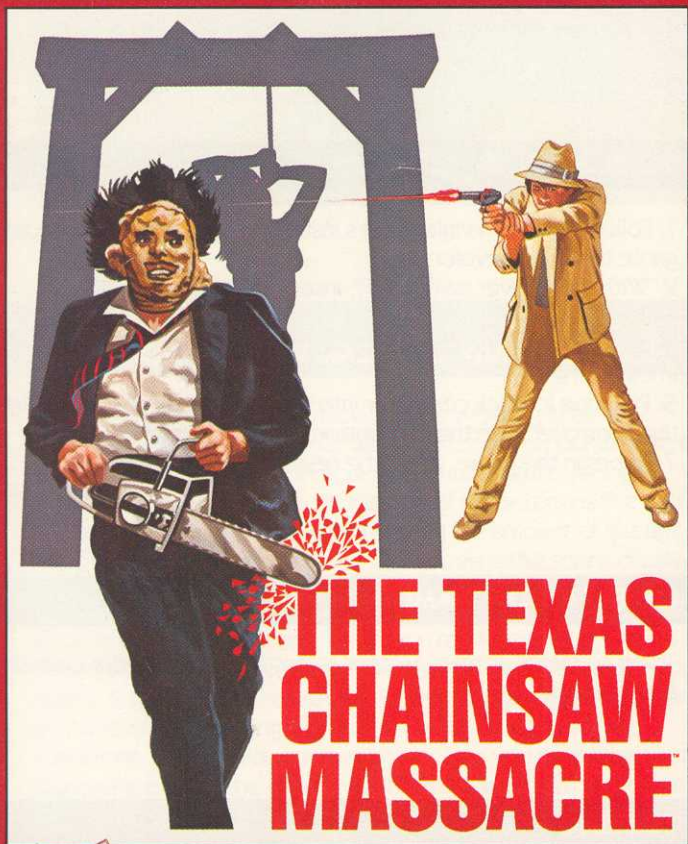


INSTRUCTIONS

THE TEXAS CHAINSAW MASSACRE™



THE TEXAS CHAINSAW MASSACRE™



008

WIZARD VIDEO GAMES™

▶ Recreate the chilling climax of the most horrifying movie ever made! WIZARD VIDEO GAMES presents THE TEXAS CHAINSAW MASSACRE VIDEO GAME, on your ATARI 2600 or SEARS Tele-Game Video Arcade.

Grab your joystick and become "Leatherface," the homicidal, chainsaw wielding maniac of your nightmares! A group of hapless tourists have trespassed on your property. One by one, they've been hunted down and eliminated. Now, only a handful remain! So, oil up your chainsaw and find as many victims as you can before your fuel runs out!

▶ TO BEGIN PLAY

1. Following the manufacturer's instructions, connect your video game to your television set.
2. With the power switch OFF, insert the game cartridge.
3. Turn the power ON.
4. Neither the difficulty switch nor the game select switch is used in this game.
5. Plug one joystick controller into the left controller port. Hold the controller with the red button in the upper left corner.
7. To begin the game, press the reset button.

▶ OBJECT OF THE GAME

Try to eliminate as many victims as possible before your chainsaw fuel runs out.

▶ SCORING

For each victim you catch, you will receive 1,000 points.

PLAYSCREEN



HOW TO PLAY THE TEXAS CHAINSAW MASSACRE VIDEO GAME

The player controls Leatherface and his whirring chainsaw. Computer-controlled victims flee in terror as you pursue them. Beware of the obstacles in your way—cow skulls, fences, wheelchairs, and thickets. At the top of the screen is the number of fuel tanks left, and a gauge indicating the amount of gas left in the chainsaw. At the bottom of the screen is the score display.

Using your joystick, move Leatherface in the desired direction and try to overtake your victim. When you're close enough, press the joystick button once to rev up the chainsaw and eliminate your quarry. Caution: The chainsaw is always idling, using only small amounts of gas. Revving the motor quickly drains your fuel. Therefore, be sure you are in range before you press the button. Leatherface starts the game with three tanks of gas, so conserve your fuel.

BONUS: Extra fuel is awarded every 5,000 points.

Watch out for obstacles that hinder you from getting to your prey. Cow skulls, fences, wheelchairs and thickets appear at random in your path. If you run into an obstacle, Leatherface is momentarily

delayed, allowing victims to escape. Hint: You will find that thickets give way to the bite of your chainsaw. But keep an eye on that fuel gauge! The game is over when your last tank of gas runs out, and one of the survivors returns to kick Leatherface in the pants!

WIZARD VIDEO GAMES WARRANTY POLICY

90 DAY WARRANTY

WIZARD VIDEO GAMES will replace this product within 90 days of purchase if defective in material or manufacture, provided it is delivered or sent POSTPAID with PROOF OF DATE OF PURCHASE to WIZARD VIDEO GAMES. This warranty does not cover damage resulting from accident, abuse, or misuse. This warranty gives you specific legal rights. You may also have other rights which vary from state to state. Direct all returns to: WIZARD VIDEO GAMES, 948 N. Fairfax Avenue, Los Angeles, CA 90046



*ATARI is a registered trademark of ATARI, INC.

© 1983 Wizard Video Games