

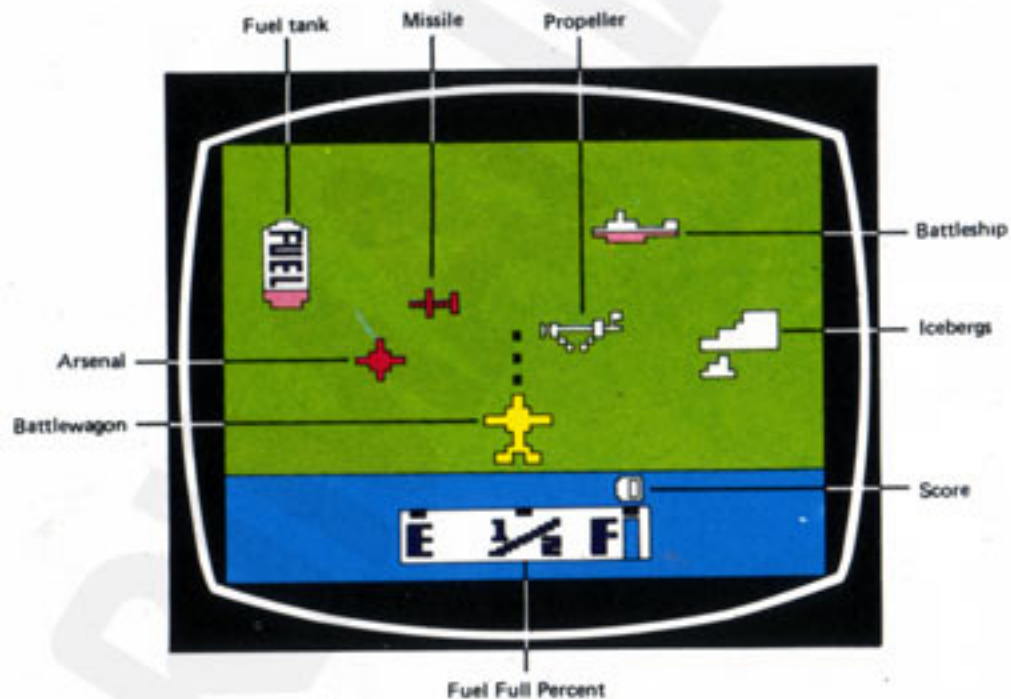
THE BERMUDA

SS-009

THE BERMUDA

Game Description

An enemy has secretly occupied the Bermuda Islands protected by his fuel tanks, battleships, propellers, missiles and space arsenals. You are a commandant to command an exquisite battlewagon with unlimited bombs. Your mission is to stop all enemy dangerous attacks by launching bombs. You have three perfect battlewagons. Just when one is unfortunately destroyed by the enemy, another is going out to execute the order in place of the previous one. In the procession, there are a few icebergs to obstruct your battlewagon.



Preparation Steps

Step 1: Check to be sure that the Video Computer System is connected to the TV, the power supply is plugged in, and a controller is plugged into the left jack at the rear of the Video Computer System.

Step 2: Insert a game Cartridge and then turn on the switch. (Caution:

the switch should be turned off at all times when there is no cartridge in the console.)

Step 3: Select the game with the Game Select Switch and start the game by switching the Game Reset Switch.

Using the Controller

As you can control the joystick up, down, right, and left, your spaceship moves up, down, right, and left. Press the red button and the missiles are launched.

Game Variations

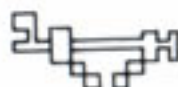
Game 1 : 1 player

Game 2 : 2 players

Scoring



Battleship: 30



Propeller: 60



Fuel tank: 80



Missile : 100



Arsenal : 500

