

Have you tried
these other TurboChip™
game cards?

- Bonk's Adventure™
- Cyber Core™
- Double Dungeons™
- Bloody Wolf™

NEC

NEC Technologies, Inc.
1255 Michigan Drive
Wood Dale, IL 60191 1990

"TurboGrafx," "TurboTap,"
"TurboPad," "TurboChip" and
"King of Casino" are trademarks
of NEC Technologies, Inc.

© 1990 NEC Technologies, Inc.
Printed in U.S.A.

TGM045059010M

KING OF CASINO™



**TURBO
16
GRAFX™**

Thank You

...for Buying this Advanced TurboChip Game Card, "King of Casino."™



Before using your new TurboChip game card, please read this instruction manual carefully. Familiarize yourself with the proper use of your TurboGrafx-16 Entertainment SuperSystem, precautions concerning its use and the proper use of this TurboChip game card. Always operate your TurboGrafx-16 SuperSystem and this TurboChip game card according to instructions. Please keep this manual in a safe place for future reference.

©1990 Victor Musical Industries, Inc.
©1990 Algorithm Institute
TurboGrafx™-16 Entertainment SuperSystem
TurboChip™ Game Card

WARNINGS

- 1 Be sure power is turned off when changing game cards.
- 2 This is a precision device and should not be used or stored under conditions of excessive temperature or humidity.
- 3 Do not forcibly bend your TurboChip game cards.
- 4 Do not touch the inside of the terminal area or expose the SuperSystem to water, etc., as this might damage the unit.
- 5 Do not wipe your SuperSystem or TurboChip game cards with volatile liquids such as paint thinner or benzene.

TurboChip game cards are made especially for use with the TurboGrafx-16 Entertainment SuperSystem and will not operate on other systems.

Any duplication, copying or rental of this software is strictly prohibited.

Inserting the TurboChip Game Card

- 1 Remove the TurboChip game card from its plastic case.
- 2 Hold the TurboChip game card with the title side up and gently slide it into the Game Card Port until you feel a firm click (do not bend the game card or touch its metal parts as this could erase the program).
- 3 Slide the Control Deck Power Switch to the ON position (if your game card is not inserted properly, the Power Switch will not move all the way to the right).
- 4 The title screen of your particular TurboChip game card should appear on your television.

Welcome, King of Casino!

Get ready for the most realistic video casino games ever. King of Casino features brilliant graphics, realistic sounds and true-to-life action and odds.

You take off on a whirlwind adventure with action that rivals "Vegas," Reno and Monaco! Your adventure begins when you check into your hotel. You stock up on information, listen to some music and then you're on your way to becoming "King of Casino." As you stroll out onto the street, you can choose one of 15 different casinos—some big, some small. Each Casino has its own characteristics and special-

izes in 2 or more of 5 different games—poker, blackjack, slot machines, Keno or roulette. Roam around inside. Watch what the other players are doing. Check out the action. Choose your game and prepare yourself, because in a couple of moments, you're the "odds-on" favorite in this fascinating journey of luck and skill.

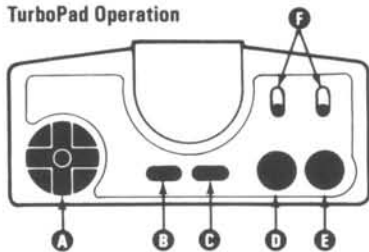
Object of the Game

King of Casino offers the same kind of enjoyment as staying at a Casino Hotel. But to become the real "King of Casino," you must win at least 10 million dollars by the end of the various games.

Please Note: For more than one player, a TurboGrafx-16 TurboTap accessory along with a TurboPad controller for each additional player is recommended (but not required). These items should be available from the same retail outlet where your TurboGrafx-16 Entertainment SuperSystem was purchased.

Starting the Game

TurboPad Operation



- A Direction Key** (4-way controller)
Used to select modes, casinos, playing tables and other choices.
- B SELECT Button**
Not used in this game.
- C RUN Button**
Starts the game and activates Keno.
- D Button II**
Used to cancel selections and to speed up arrow by pressing the Direction Key and then pressing Button II.
- E Button I**
Used to enter selections.
- F Turbo Switches**
Should be on "off".

Starting the Game

From the title screen, press the RUN Button or Button I.

Check in at the Front Desk

You are now at the front desk of your Casino Hotel. You must "check in" by selecting a playing mode, indicating how many people will be playing, whether you are starting from the beginning of the game or "continuing," and entering your name (if you are starting from the beginning).

Select the Mode

Normal Mode This includes animation and sound effects which convey the atmosphere of a real casino.

Fast Mode This is a high-speed mode for those who want only to bet and see the results.

Party Mode A multi-player competition to see who is the first to reach a pre-determined amount of money.

Starting the Game continued

Enter the Number of Players

Move the Direction Key up or down to select 1 to 5 players in "Normal" and "Fast" modes, or 2 to 5 players in "Party" mode. Use Button I to enter your selection.

Select "New Player" or "Continue"

New Player To play from the beginning, select "New Player" and proceed to the next step, "Name Entry."

Continue To continue from where you left off, select "Continue" and then enter your password.

Enter Your Name

Move the Direction Key up or down, left or right to select up to 6 letters and/or numbers. Use Button I to enter the letters and numbers you have chosen.

When you have finished entering your name, select "END" or press "RUN." The amount of money you have and the number of times the password will be shown will appear on the screen. Press Button I to proceed.

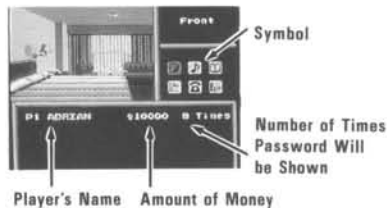
Enter Your Password

Move the Direction Key up or down, left or right to enter your 16-letter (or number) password. Use Button I to enter your password.

When you have finished entering your password, select "END" or press "RUN." The amount of money you have and the number of times the password will be shown will appear on the screen. Press Button I to proceed.

Note: You may save your password only 10 times.

Getting Ready in Your Hotel Room



After you've checked into the hotel, you go up to your room. Here you'll have time to relax, find out how much money you have to spend, review a list of the casinos and study their characteristics.

You can obtain this information from the following symbols (use the Direction Key to select a symbol. Press Button I to enter your choice):



Front Desk

Choosing this symbol takes you to the Front Desk. Here you can change modes (Normal and Fast) during play.



Music

This symbol lets you play different music during the games. You can also turn the music off. Again, use the Direction Key to select the music you want and press Button I to enter your choice.



Password

After you select this symbol, use the Direction Key to select your name from the rest of the players in the multi-player modes, then press Button I to enter it. At the bottom of the screen, a 16-letter or number password will be displayed. After that, the remaining number of times the password will be shown is displayed. You should write down this password, as you will need it to continue with the same amount of money if there is an interruption in the game. Press Button I to return to the hotel room screen.



Graph

This symbol allows you to see a graph showing the increase and decrease in each player's money. Pressing Button I will return you to the hotel room screen.



Shop Data

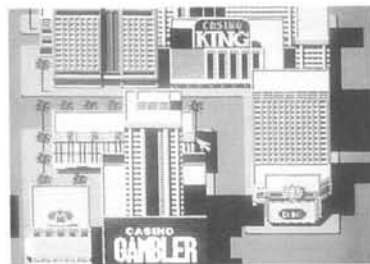
This symbol allows you to purchase information about each of the 15 casinos. Select a casino using the Direction Key and enter your choice with Button I. Information will appear showing you the ranking of the casino, its size and the number of tables available for each game. (The rank indicates the degree of difficulty. The greater the number of stars, the more difficult the casino.)



Exit

Press Button I.

Walking the Streets



Now it's time to select your casino. When the street map appears, use the Direction Key to select a casino and press Button I to enter your selection.

Note: To return to the hotel when outside the casinos, press Button II.

In the Casino

Ahh...at last you are inside the casino!
Good luck!

Use the Direction Key to Select a Game

Use Button I to Select a Table

Position arrow over your choice and press Button I.

To Go to a Different Casino

To go to a different casino, or back into the street, select "Cashier" and press Button I.

Note: The maximum and minimum amount that can be bet for each game is pre-determined.

Speeding Up Arrow Movement

Press the Direction Key and then press Button II.

Resetting the Game

During play, the game can be reset to the title screen by holding down the RUN Button and pressing the SELECT Button at the same time.

How to "Continue"

When the game is over, and the title screen appears, you may resume play by selecting "continue" and then entering your password. This returns you to the beginning of the last round where you saved your password. You may "continue" an unlimited number of times.

Poker

The player is dealt 5 cards from a deck of 52. These 5 cards are used in combination to form anything from one pair to a straight flush. In "King of Casino" you receive prize money

for two pairs and above. You may discard and draw only once to try for a higher-scoring hand. You may discard and draw any or all of your cards.

Possible Hands and Prize Money Payoffs

Name of Hand	Payoff Rate	Makeup of Hand
Two pairs	x2	Two pairs of cards (a pair being two cards of the same value).
Three of a kind	x5	Three cards of the same value.
Straight	x20	Any consecutive sequence of five cards.
Flush	x50	Five cards of the same suit.
Full house	x70	Combination of one pair and three of a kind.
Four of a kind	x400	Four cards of the same value.
Straight flush	x1200	Any consecutive sequence of five cards of the same suit.
Five of a kind	x4000	Four cards of the same value and a joker.

Sequence of Play

Decide Whether to Play ("WILL YOU PLAY?") Select "Yes" or "No" with the Direction Key. Enter your choice with Button I. (Use Button II to go back inside the casino).

Bet Your Chips ("PLACE YOUR BET") Use the Direction Key to indicate the amount of your bet, and press Button I to enter it. Use up and down on the Direction Key for numbers. Use left and right for setting the column.

Throw Out Cards Indicate the cards you want to keep with the Direction Key. Press Button I to confirm your selection. The word "HOLD" will turn red on the cards you want to keep (Use Button II to cancel your selection).

Draw Cards Move the Direction Key right or left to "DRAW" and press Button I to play your hand.

Display Results The results will be displayed instantly. Press Button I or Button II to let the next player have his or her turn.

Blackjack

This game is a one-on-one competition with the dealer. The goal is to have 2 or more cards total 21 or as close to 21 as possible without going over.

The cards 2 through 10 are counted at face value. Jacks (J), Queens (Q) and Kings (K) are counted as 10. Aces (A) are counted as either 1 or 11, whichever you desire. You can take as many cards as you like. You win if you have 21. If you exceed 21, you are "busted" and you lose. If you have less than 21, but are closer to 21 than the dealer, you win. If you and the dealer both have the same card total, the hand ends in a "draw" (tie) and your original bet is returned.

Insurance

If the dealer's opening card is an ace, you can purchase "insurance" (insurance against the dealer getting Blackjack) by putting up half the amount of the bet. If the dealer's next card is a 10, you will not lose the money you bet even though they have Blackjack. If the dealer doesn't get Blackjack, the dealer keeps the insurance money regardless of who wins.

Doubledown

If the two cards dealt to you total 9, 10 or 11, you can "doubledown" (double your bet). If you then get 10, your odds of winning are high and you get double your bet. But this is a gamble. If you use doubledown, you can only draw one more card.

Split

If the two cards dealt to you are a pair, you can "split" (place two bets). When you split, you separate the pair and play each one separately. You must put up your original bet again, however, and play both cards at the same time.

Return on Your Bet

When you win in blackjack, you get an amount equal to your bet from the dealer. If the hand ends in a "draw," the money you bet is returned. If you get Blackjack, you win twice what you bet.

Sequence of Play

Decide Whether to Play ("WILL YOU PLAY?") If you select "Yes," you are dealt 2 cards. One is face down.

Place Your Bet

Use the Direction Key to indicate the amount, and press Button I to enter it. Move the Direction Key up and down for numbers. Move the Key left and right to set the column.

One of the dealer's cards is shown.

Play Cards

"Hit" means you want a card. "Stand" means you're done. "Doubledown" and other situations may arise based upon your hand. Use the Direction Key to select, and press Button I to enter.

Continue to ask for a "Hit" until you're ready to "Stand." When you want to "Stand," press Button I and your total will appear. Press Button I or II to continue.

Roulette

In roulette, there is a board marked with the numbers 0, 00 and 1 through 36 in red and black. You bet by placing chips on a number or group of numbers (up to 12). The dealer spins a wheel marked with the 38 numbers and drops a ball onto it. Depending on which number the ball lands on, you may win your bet multiplied by a factor determined by which

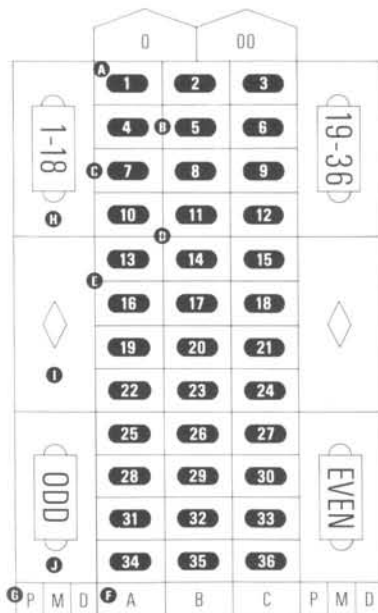
number you bet on. King of Casino is like Las Vegas or Monaco in the sense that you can continue to place bets for a certain amount of time after the dealer has dropped the ball onto the wheel (until the bell sounds). Deciding how to bet after the ball has been dropped is one of the keys to the game.

Types of Bets and Payoff Rates

Type of Bet	Explanation	Payoff Rate
A 1-number bet	Bet on one of the numbers 0, 00 or 1-36.	x36
B 2-number bet	Bet on two vertically or horizontally adjoining numbers.	x18
C Bet on 3 numbers in a row	Bet on one horizontal row of three numbers.	x12
D 4-number bet	Bet on four vertically and horizontally joining numbers.	x9
E 2 rows of 3 numbers	Bet on six numbers in two horizontally adjoining rows.	x6
F 1 column of numbers	Bet on 1 column of 12 numbers by putting your chip on A, B, or C.	x3
G Bet on 4 rows of numbers (bet on 1 dozen)	Bet on the first block of 12 numbers by putting your chip on P. Bet on the middle block of 12 numbers by putting your chip on M. Bet on the last block of 12 numbers by putting your chip on D.	x3
H Bet on the first or second half of the numbers	Bet on all numbers 1 through 18 (MANQUE), or all numbers 19 through 36 (PASSE).	x2
I Bet on red or black	Bet on either the red or black numbers.	x2
J Bet on odd or even numbers	Bet on either the odd (IMPAIR) or even (PAIR) numbers.	x2

Roulette continued

Examples of Chip Placement for Betting



Sequence of Play

You can place your bets by pressing Button I only when the "Push I to Bet" message is flashing.

Select the Player Who Will Bet this Round

Use the Direction Key to select a player and press Button I to enter your choice. Press Button II to cancel.

Place Your Bet

Select a position with the Direction Key and enter your bet with Button I. You can make up to 12 bets for each spin of the roulette wheel! At this time, you can also change the amount of money you have already bet by pressing Button I again. If your money runs out, the game is cancelled. Press Button II when you are done betting.

Note: Make sure the arrow is not highlighted or your bet will be deleted!

The Roulette Wheel Spins

The ball is thrown in and you can continue to bet until the bell sounds.

The Bell Sounds

The results appear and money is paid out.

"Push I to Bet" Flashes Again

Get ready to enjoy another round, or press Button II to go back inside the casino.

Slot Machines and Keno

Playing a slot machine is simple. When you put a coin in the slot and pull the lever, 3 drums rotate. When the drums stop, you win based upon the combination of pictures that line up. The number of coins you bet determines the number of rows where you want the pictures to line up.

One Coin	1 Row	Middle
Two Coins	2 Rows	Middle and Upper
Three Coins	3 Rows	Upper, Middle and Lower

Keno

Keno cards are purchased from the Keno Lady. On the card are numbers from 1 to 80. Out of these, up to 15 numbers are selected, and the card is stamped. When this is done, the dealer who runs the Keno game selects 20 numbers at random. The amount you win is based upon how many of your numbers match those of the dealer. Keno is like a lottery and has a maximum payoff of 50,000 times your bet. Keno offers an exhilarating feeling that makes you want to get in on the action. You can get to play Keno in one of

Sequence of Play

Select a Machine

Each machine takes a different amount of money. Use the Direction Key to select a machine and press Button I to enter your choice. If you want to change machines, press Button II.

Insert Your Coin by Pressing Button I

Each time you press Button I, one coin is inserted. Insert 1 to 3 coins.

Pull the Lever by Pressing Button II

Collect Your Winnings!

When the drums stop, winnings are based on the results.

two ways: when the Keno Lady appears, or by walking over to the Keno board.

In Normal Mode, the Keno Lady suddenly appears while you're playing other games. If you participate, Keno proceeds automatically and the results are shown within a few moments.

When you play Keno while playing another game, if you leave the casino or run out of money before the results are displayed, the winnings are not paid out.

Keno continued

Payoff Rates—Dividend on \$1 Bet

		Number of Selections														
		1	2	3	4	5	6	7	8	9	10	11	12	13	14	15
Number of "Matched" Selections	1	3	0	0	0	0	0	0	0	0	0	0	0	0	0	0
	2		12	1	1	0	0	0	0	0	0	0	0	0	0	0
	3			42	4	1	1	0	0	0	0	0	0	0	0	0
	4				112	25	4	1	0	0	0	0	0	0	0	0
	5					500	88	20	9	4	2	1	0	0	0	0
	6						1480	400	92	44	20	8	5	1	1	1
	7							7000	1480	300	132	72	32	16	10	7
	8								18000	4000	960	360	240	80	40	20
	9									20000	3800	1800	600	720	300	100
	10										25000	12000	1480	4000	1000	400
	11											28000	8000	8000	3200	4500
	12												36000	20000	16000	10000
	13													36000	24000	25000
	14														40000	40000
	15															50000

Sequence of Play

Decide Whether to Play ("WILL YOU PLAY?")
Select "Yes" or "No" with the Direction Key and press Button I to enter your choice.

Decide on the Amount of Your Bet

Use the Direction Key to select the amount and press Button I to enter your bet.

Select Your Keno Numbers

Use the Direction Key to select your numbers on the Keno Card. Press Button I to stamp it. Press Button II to cancel.

Press the RUN Button

If you walked over the Keno Board, press "RUN" to see the results. If you played Keno when the Keno Lady appeared, pressing the "RUN" Button will return you to the game you were playing. The results will soon be displayed.

Playing Tips

Visit all of the casinos first. Note the tables they have. Also, keep track of the limits (both minimum and maximum) on tables.

Save your password after a really large win. Then, take higher risks. If you lose your money, you can always re-enter the password and start back from where you were before.

In blackjack, never take insurance. It's usually a "sucker" bet. Doubledown if you have a:

- 9 and the dealer has 2-6 showing;
- 10 and the dealer has 2-9 showing;
- 11 and the dealer does *not* have an ace showing!

Never split a pair of tens!

Call the TurboGrafx Hotline at (708) 860-3648 for additional game-playing tips!

NEC TurboChip™ 90-Day Limited Warranty

NEC TECHNOLOGIES, INC. ("NECT") warrants this product to be free from defects in material and workmanship under the following terms:

HOW LONG IS THE WARRANTY

This product is warranted for 90 days from the date of the first consumer purchase.

WHO IS PROTECTED

This warranty may be enforced only by the first consumer purchase. You should save your proof of purchase in case of a warranty claim.

WHAT IS COVERED

Except as specified below, this warranty covers all defects in material or workmanship in this product. The following are not covered by the warranty:

1. Any product that is not distributed in the U.S.A. by NECT or which is not purchased in the U.S.A. from an authorized NECT dealer.
2. Damage, deterioration or malfunction resulting from:
 - a) accident, misuse, abuse, neglect, impact, fire, liquid damage, lightning or other acts of nature, commercial or industrial use, unauthorized product modification, or failure to follow instructions supplied with the product;
 - b) repair or attempted repair by anyone not authorized by NECT;
 - c) any shipment of the product (claims must be submitted to the carrier);
 - d) removal or installation of the product;
 - e) any other cause that does not relate to a product defect.

HOW TO OBTAIN WARRANTY SERVICE

For warranty information, call 1-800-366-0136 Monday-Friday, 8:00 A.M. to 5:00 P.M. Central Time.

LIMITATION OF IMPLIED WARRANTIES

ALL IMPLIED WARRANTIES, INCLUDING WARRANTIES OF MERCHANTABILITY AND FITNESS FOR A PARTICULAR PURPOSE, ARE LIMITED IN DURATION TO THE LENGTH OF THIS WARRANTY.

EXCLUSION OF DAMAGES

NECT'S LIABILITY FOR ANY DEFECTIVE PRODUCT IS LIMITED TO THE REPAIR OR REPLACEMENT OF THE PRODUCT AT OUR OPTION. NECT SHALL NOT BE LIABLE FOR:

1. Damage to other property caused by any defects in this product, damages based upon inconvenience, loss of use of the product, loss of time, commercial loss; or
2. Any other damages, whether incidental, consequential or otherwise.

SOME STATES DO NOT ALLOW LIMITATIONS ON HOW LONG AN IMPLIED WARRANTY LASTS AND/OR DO NOT ALLOW THE EXCLUSIONS OR LIMITATION OF INCIDENTAL OR CONSEQUENTIAL DAMAGES, SO THE ABOVE LIMITATIONS AND EXCLUSIONS MAY NOT APPLY TO YOU.

HOW STATE LAW RELATES TO THE WARRANTY

This warranty gives you specific legal rights, and you may also have other rights which vary from state to state.