

A BAD, BAD, BAD NIGHT INDEED

Screwy Satellites.
Irksome Killer Rocks.
Irritating Repairbots.

It's a sad and sorry sight. So, clean-up the unfriendly skies by blasting all satellites in the allotted time. Or, you're history.

ZONE RANGER™

Instructions for
Atari® Home Computers
and the 5200™

ACTIVISION®

HOW YOU GOT THERE

- * Insert cartridge into your computer or 5200™ with power Off. Then, turn power ON.
- * Plug a Joystick or controller into port one.

If using an Atari® Home Computer:

- * Press the START button to begin.
 - * Press the SELECT button first for two player version. Players share Joystick.
- * Press the SPACE BAR to pause. Press again to continue.
- * Press SYSTEM RESET to return to title screen.
- * Pilot your cruise ship by moving the Joystick in the desired direction.
- * To fire, press Joystick button.

If using the Atari® 5200™:

- * Press the START button to begin.
 - * Press the # key first for two player version. Players share controller.
- * Press the PAUSE button to pause. Press again to continue.
- * Press RESET button to return to title screen.
- * Pilot your cruise ship by moving the controller in the desired direction.
- * To fire, press either lower side button.

CRUISE SHIPS. Begin with four and earn one more for every 1000 points earned. Each ship has unlimited fire power.

THE NASTIES!!

They're everywhere. Colliding with ANY of them will destroy your ship, but a few of them demand special mention.

SATELLITES. Destroy all sixteen satellites in any level to advance to the next level. Green and red communication beams link the satellites together. Don't let the red beams strike your ship!!

KILLER ROCKS. Silent, get-in-the-way stuff that just lumber about. Relatively harmless...until you run into one.

REPAIRBOTS. When the red alert sounds, enter any warp hole. Then, shoot the repairbot that's fixing to fix up a destroyed satellite.

BOOMERANGS. The worst. You'll find out. Strictly higher level material.

ANY HELP OUT THERE?

WARP HOLES. A momentary means of escape. Enter and exit as you please.

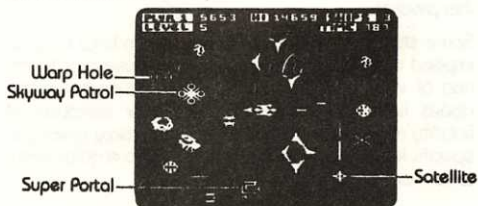
SONIC SPARKLERS. Touch them and you'll be invincible for as long as their music plays.

SUPER PORTAL. Your only entry into The Inner Sanctum.

THE INNER SANCTUM. Drop in for free help. Go for the dots.

SKYWAY PATROL. When you return from The Super Portal, come in contact with the Skyway Patrol. He'll knock off one satellite for every dot you got.

SEVENTH DIMENSION. Enter at your own risk. Sure, you'll get more points. But you won't last as long. (Found in level one only.)



DESIGNER NOTES:

"Just thought that I'd clue you in to what I've discovered out there. Entering a Warp Hole may be an easy way to escape immediate danger. But a word for the spacewise: it COULD be worse where you exit. Also, in case you can't find the satellites, follow the path of the beams. Finally, touch the safety Sonic Sparklers whenever you can—especially if you plan to tackle one of the vicious boomerangs.

Dan Thompson



ACTIVISION® LIMITED WARRANTY

Activision, Inc. warrants to the original consumer purchaser of this Activision product that it will be free from defects in materials and workmanship for a period of one (1) year from the date of purchase. Activision agrees to either repair or replace, at its option, free of charge, any product discovered to be defective within the warranty period upon receipt of the product, postage paid, with proof of date of purchase, at its Factory Services Center.

This warranty is limited to the electronic circuitry and mechanical parts originally provided by Activision and is not applicable to normal wear and tear. This warranty shall not be applicable and shall be void if the defect has arisen through abuse, mistreatment or neglect. This warranty is in lieu of all other express warranties and no other representation of claims of any nature shall be binding on or obligate Activision. Any implied warranties applicable to this product are limited to the one-year period described above. In no event will Activision be liable for any special, incidental or consequential damage resulting from possession, use or malfunction of this product.

Some states do not allow limitations on how long an implied warranty lasts and/or the exclusion or limitation of incidental or consequential damages, so the above limitations and or exclusion or limitation of liability may not apply to you. This warranty gives you specific legal rights, and you may also have other rights which vary from state to state.

CONSUMER REPLACEMENTS

Consumer Relations

Activision, Inc.

2350 Bayshore Frontage Rd.

Mountain View, CA 94043

U.P.S. or registered mail is recommended for returns.

For information about new releases, call 800-633-4263 anytime on the weekend. In California, call (415) 960-6044/5.

Atari® and 5200™ are trademarks of Atari, Inc.

G-943-06